

Return of the founder Chikungunya virus to its place of introduction into Brazil is revealed by genomic characterization of exanthematic disease cases

Zuinara Pereira Gusmão Maia, Felicidade Mota Pereira, Rodrigo Fabiano do Carmo Said, Vagner Fonseca, Tiago Gräf, Fernanda de Bruycker Nogueira, Vanessa Brandão Nardy, Joilson Xavier, Maricelia Lima Maia, André L. Abreu, Carlos F. Campelo de Albuquerque, Wanderson Kleber Oliveira, Julio Croda, Ana Maria Bispo de Filippis, Rivaldo Venancio Cunha, Jose Lourenço, Tulio de Oliveira, Nuno Rodrigues Faria, Luiz Carlos Junior Alcantara & Marta Giovanetti

To cite this article: Zuinara Pereira Gusmão Maia, Felicidade Mota Pereira, Rodrigo Fabiano do Carmo Said, Vagner Fonseca, Tiago Gräf, Fernanda de Bruycker Nogueira, Vanessa Brandão Nardy, Joilson Xavier, Maricelia Lima Maia, André L. Abreu, Carlos F. Campelo de Albuquerque, Wanderson Kleber Oliveira, Julio Croda, Ana Maria Bispo de Filippis, Rivaldo Venancio Cunha, Jose Lourenço, Tulio de Oliveira, Nuno Rodrigues Faria, Luiz Carlos Junior Alcantara & Marta Giovanetti (2020) Return of the founder Chikungunya virus to its place of introduction into Brazil is revealed by genomic characterization of exanthematic disease cases, *Emerging Microbes & Infections*, 9:1, 53-57, DOI: [10.1080/22221751.2019.1701954](https://doi.org/10.1080/22221751.2019.1701954)

To link to this article: <https://doi.org/10.1080/22221751.2019.1701954>



© 2019 The Author(s). Published by Informa UK Limited, trading as Taylor & Francis Group, on behalf of Shanghai Shangyixun Cultural Communication Co., Ltd



Published online: 27 Dec 2019.



Submit your article to this journal [↗](#)



Article views: 2297



View related articles [↗](#)



View Crossmark data [↗](#)



Citing articles: 3 View citing articles [↗](#)

Return of the founder Chikungunya virus to its place of introduction into Brazil is revealed by genomic characterization of exanthematic disease cases

Zuinara Pereira Gusmão Maia^{a,*}, Felicidade Mota Pereira^{a,*}, Rodrigo Fabiano do Carmo Said^b, Vagner Fonseca^{c,d}, Tiago Gräf^e, Fernanda de Bruycker Nogueira^f, Vanessa Brandão Nardy^a, Joilson Xavier^c, Maricelia Lima Maia^{g,h}, André L. Abreuⁱ, Carlos F. Campelo de Albuquerque^j, Wanderson Kleber Oliveira^k, Julio Croda^l, Ana Maria Bispo de Filippis^f, Rivaldo Venancio Cunha^{m,n}, Jose Lourenço^o, Tulio de Oliveira^d, Nuno Rodrigues Faria^o, Luiz Carlos Junior Alcantara^{c,f,*} and Marta Giovanetti^{b,f,*}

^aLaboratório Central de Saúde Pública, Departamento de Virologia, Salvador, BH, Brazil; ^bCoordenação Geral de Vigilância de Arboviroses (CGARB); ^cLaboratório de Genética Celular e Molecular, Instituto de Ciências Biológicas, Universidade Federal de Minas Gerais, Belo Horizonte, Brazil; ^dKwaZulu-Natal Research Innovation and Sequencing Platform (KRISP), College of Health Sciences, University of KwaZulu-Natal, Durban, South Africa; ^eLaboratório de Patologia Experimental, Instituto Gonçalo Moniz, Fiocruz, Salvador, BH, Brazil; ^fLaboratório de Flavivírus, Instituto Oswaldo Cruz, Fundação Oswaldo Cruz, Rio de Janeiro, RJ, Brazil; ^gUniversidade Estadual de Feira de Santana, Feira de Santana, Brazil; ^hSecretaria de Saúde de Feira de Santana, Feira de Santana, Brazil; ⁱCoordenação Geral dos Laboratórios de Saúde Pública/Secretaria de Vigilância em Saúde, Ministério da Saúde, (CGLAB/SVS-MS) Brasília, Distrito Federal, Brazil; ^jOrganização Pan-Americana da Saúde/Organização Mundial da Saúde, Brasília, Distrito Federal, Brazil; ^kSecretaria de Vigilância em Saúde, Ministério da Saúde (SVS-MS), Brasília, Distrito Federal, Brazil; ^lDepartamento de Vigilância de Doenças Transmissíveis/Secretaria de Vigilância em Saúde, Ministério da Saúde (DEVIT/SVS-MS), Brasília, Brazil; ^mFederal University of Mato Grosso do Sul, Brazil; ⁿFundação Oswaldo Cruz, Coordination of Health Surveillance and Reference Laboratories, Rio de Janeiro, RJ, Brazil; ^oDepartment of Zoology, University of Oxford, Oxford, UK

ABSTRACT

Between June 2017 and August 2018, several municipalities located in Bahia state (Brazil) reported a large increase in the number of patients presenting with febrile illness similar to that of arboviral infections. Using a combination of portable whole genome sequencing, molecular clock and epidemiological analyses, we revealed the return of the CHIKV-ECSA genotype into Bahia. Our results show local persistence of lineages in some municipalities and the re-introduction of new epidemiological strains from different Brazilian regions, highlighting a complex dynamic of transmission between epidemic seasons and sampled locations. Estimated climate-driven transmission potential of CHIKV remained at similar levels throughout the years, such that large reductions in the total number of confirmed cases suggests a slow, but gradual accumulation of herd-immunity over the 4 years of the epidemic in Bahia after its introduction in 2014. Bahia remains a reservoir of the genetic diversity of CHIKV in the Americas, and genomic surveillance strategies are essential to assist in monitoring and understanding arboviral transmission and persistence both locally and over large distances.

ARTICLE HISTORY Received 25 September 2019; Revised 18 November 2019; Accepted 2 December 2019

KEYWORDS Chikungunya; East-Central-South-African genotype; Northeast Brazil; surveillance; portable genome sequencing

Text

Chikungunya virus (CHIKV) is an emerging mosquito-borne virus belonging to the genus *Alphavirus* and *Togaviridae* family and poses a significant public health problem in tropical and subtropical regions [1]. CHIKV infection results in an acute, debilitating febrile illness, but may also become a chronic condition, with persistent or relapse symptoms of arthropathy [1]. Virus diversity can be classified into four distinct virus genotypes: the Asian, the West African, the East-Central-South-African (ECSA) and the Indian Ocean Lineage (IOL) [1]. In September 2014, the first autochthonous CHIKV infections were confirmed in Brazil. They were characterized by two distinct genotypes: the CHIKV Asian genotype was found in

Oiapoque, a city in the North of Brazil, close to the Caribbean; and CHIKV-ECSA, which originated from an infected individual in Angola and was found in Feira de Santana, Bahia in Northeast Brazil [1]. Since then, CHIKV-ECSA has been detected in several other Brazilian states in the Northeast, Southeastern and Northern regions, exerting significant pressures on local public health systems [2–4].

Between June 2017 and August 2018, Bahia (Figure 1 panel A) reported several cases (across municipalities) of patients presenting febrile illness, compatible with arboviral infection, characterized by severe joint pain accompanied by edema, rash, skin and ocular manifestations, plantar fasciitis and morning joint stiffness. Using a combination of portable genome sequencing and genomic epidemiology in this study,

CONTACT Luiz Carlos Junior Alcantara  luiz.alcantara@ioc.fiocruz.br; Marta Giovanetti  giovanetti.marta@gmail.com

*These authors contributed equally.

 Supplemental data for this article can be accessed <https://doi.org/10.1080/22221751.2019.1701954>.

© 2019 The Author(s). Published by Informa UK Limited, trading as Taylor & Francis Group, on behalf of Shanghai Shangyixun Cultural Communication Co., Ltd This is an Open Access article distributed under the terms of the Creative Commons Attribution License (<http://creativecommons.org/licenses/by/4.0/>), which permits unrestricted use, distribution, and reproduction in any medium, provided the original work is properly cited.

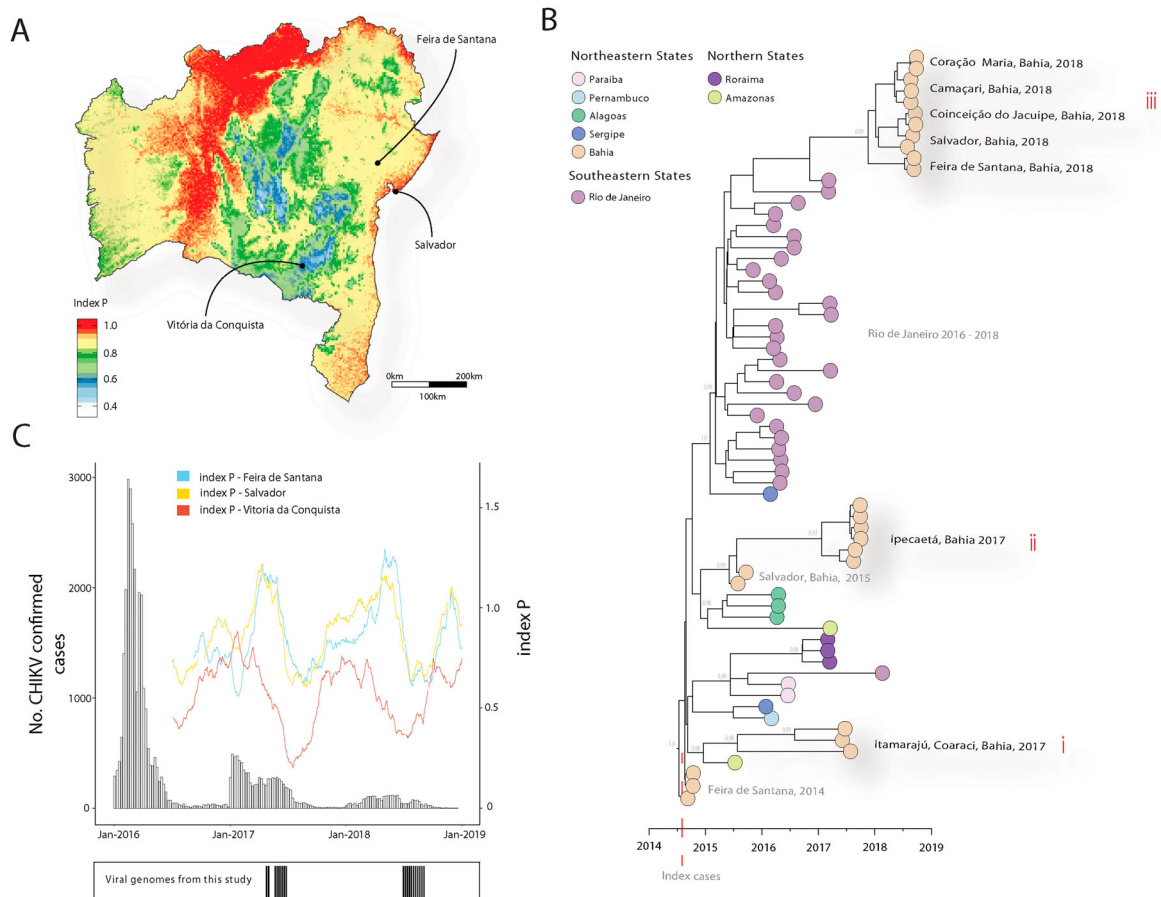


Figure 1. Return of the CHIKV-ECSA genotype into Bahia state northeast Brazil. (A) Spatial estimation of index P across the Bahia state, with Salvador, Feira de Santana and Vitoria da Conquista identified. Each pixel is the yearly mean index P (≈ 20 Km²) estimated using WorldClim V2 dataset as in [5]. Values coloured according to scale on the left. (B) Molecular clock phylogeny obtained using 20 new CHIKV near-complete genome sequences from the 2017–2018 epidemic in the municipality of Feira de Santana (black tips). Salvador, Camaçari, Coração de Maria, Conceição do Jacuipe, Coaraci, Itamarajú e Ipecaetá, in the Bahia State, Northeastern Brazil plus 47 publicly available Brazilian CHIKV-ECSA lineage sequences. Numbers along branches represent clade posterior probability >0.90 . Colours represent different locations. (C) Weekly number of laboratory confirmed cases of CHIKV between 2016 and 2018, superimposed with daily mean index P and 95% confidence interval (second Y axis). At the bottom, black bars indicate the collection dates of the viral genome sequences ($n = 20$) generated in this study.

we revealed the re-introduction of ECSA genotype into Bahia.

Serum samples obtained from 24 patients presenting symptoms compatible with arboviral infection were collected for molecular diagnostics and sent for testing at the Central Laboratory of Public Health (LACEN) in Salvador, Bahia. These samples were from several municipalities in Bahia and represented the main outbreak period of 2017 and 2018 (Figure 1C). Viral RNA was extracted from clinical samples using the QIAmp Viral RNA Mini kit (Qiagen) and submitted to real time RT-qPCR protocols for the detection of Zika virus (ZIKV), dengue virus (DENV 1-4), mayaro virus (MAYV), oropouche virus (OROV) and CHIKV as previously described [6–9]. Samples were selected for sequencing based on Ct-value <33 (to maximize genome coverage from clinical samples by nanopore sequencing [10]). Extracted RNA was converted to cDNA [10] using ProtoScript II First Strand cDNA Synthesis Kit. Then, a multiplex tiling PCR was conducted using Q5 High Fidelity Hot-Start

DNA Polymerase (New England Biolabs) and the CHIKV primers scheme, as previously described [10]. DNA library preparation was performed using the Ligation Sequencing Kit (Oxford Nanopore Technologies, ONT) and the Native Barcoding Kit (NBD103, ONT). A sequencing library was generated from the barcoded products using the Genomic DNA Sequencing Kit SQK-MAP007/SQK-LSK109 (ONT) then loaded onto a R9.4 flow cell (ONT).

Genotyping was conducted using the phylogenetic arbovirus subtyping tool available at <http://genomedetective.com/app/typingtool/chikungunya> [11] and then confirmed using Maximum Likelihood (ML) phylogeny. To investigate the dynamics of the CHIKV infection at a larger spatial scale, we generated a dataset that included all CHIKV-ECSA sequences from Brazil (ECSA-BR dataset) ($n = 67$). The ML tree was estimated using IQ-TREE 1.6.8 software [12] under the HKY nucleotide substitution model with four gamma categories (HKY+G4), which was inferred in jModelTest as the best fitting model [3]. The

statistical robustness of tree topology was inspected using 100 bootstrap replicates. The ML phylogeny was used as a starting tree for Bayesian time-scaled phylogenetic analysis using BEAST 1.10.4 [13]. Data of weekly confirmed CHIKV cases in Bahia were supplied by the Brazilian Ministry of Health and were plotted using the R software version 3.5.1 (The R Foundation).

Diagnostic assays showed that, of the viruses tested, all the samples were positive only for CHIKV infection. From serum sampled during the two outbreaks in 2017 and 2018, we selected 20 RT-qPCR+ samples geographically widespread across eight municipalities in Bahia with a cycle threshold (Ct) ≤ 30 (mean 23.08, range: 16.25–27.09). From these samples near-complete genomes were obtained (coverage range 63%–96%, mean = 73%) using a nanopore sequencing approach and the pipeline from Quick et al. for the generation of consensus sequences (Supplementary table 1) (9).

Manual and automated phylogenetic analysis revealed that all the generated genomes belong to CHIKV-ECSA genotype. ML and Bayesian phylogenetic analyses showed that since 2014, Bahia has experienced different events of CHIKV re-introduction and epidemic spread (Figure 1 panel B). The first re-introduction event dates back to July 2015 (95% Bayesian credible interval, BCI, January 2015–November 2016). Thus, samples from the municipalities of Itamarajú and Coaraci in South Bahia, are related to a basal strain from Feira de Santana, that was shown to be the founder ECSA virus from Angola [2] (clade i, Figure 1 panel B). The second re-introduction event, which dates back to January 2017 (95% BCI, October 2016–August 2017) suggests the persistence of a second lineage in the municipality of Ipecaetá (clade ii, Figure 1 panel B). Interestingly, a 2015 strain from the capital city of Bahia (Salvador, at 150Km from Ipecaetá) is associated with this re-introduction. Finally, a third re-introduction to several municipalities in the metropolitan regions of Salvador and Feira de Santana (clade iii, Figure 1 panel B) is estimated to date back to November 2018 (95% BCI, August 2017 to May 2018) with source in Rio de Janeiro (Southeastern Brazil); a city that experienced an explosive ECSA epidemic between 2016–2018 (5).

Using freely accessible climatic data from the US National Climate Data Center [14] we estimated mosquito-borne viral suitability using the index P (transmission potential [15]) for the three largest urban centres of Bahia; assuming *Aedes*-like priors as in Lourenco et al. 2019 and CHIKV-like priors with human incubation period of mean 3 days (standard deviation, STD 1) and human infectious period 4.5 days (STD 2). We estimated Higher potential in Salvador and Feira de Santana when compared with Vitoria da Conquista, with peaks in the latter

mirroring the troughs in the other two urban centres (Figure 1 panel C). These differences reflected a more general spatial pattern of low transmission potential at high altitudes which typically present unfavourable conditions for the vectors (Figure 1 panel A); with Vitoria da Conquista at 950 metres (m), Feira de Santana at 200 m and Salvador at 2 m, above sea level.

Confirmed cases presented three CHIKV epidemic waves, characterized by a continuous reduction in total cases per year from 2016 to 2018 (Figure 1 panel C). Importantly, our estimations of transmission potential remained roughly similar throughout the years; thus suggesting that the decreasing trend in the number of confirmed cases is likely a consequence of a gradual accumulation of herd-immunity over the 4 years of continuous circulation in Bahia after its introduction in 2014; similarly to what has been described for ZIKV in Feira de Santana [5].

In this study, we demonstrate the re-introduction of CHIKV-ECSA into Bahia between 2016 and 2018. Bahia was the introductory point of CHIKV-ECSA in the Americas and it is the region in Brazil that seems to have the highest genetic diversity of this genotype. Since the first registered cases in 2014, no new genomic surveillance data have been released. Our phylogenetic reconstructions show the persistence of local lineages in some municipalities and the re-introduction of new epidemiological strains from different Brazilian regions, highlighting a complex dynamic of transmission between epidemic seasons and sampled locations. Several factors including the high connectivity by air and land transport between different regions of the country, vector suitability, insufficient herd immunity and poor living conditions, might be shaping this complex viral spread between different Brazilian regions [4,6]. Focusing on the three main urban centres of Bahia, we also revealed the reconstructed transmission potential of CHIKV has remained reasonably stable throughout the years, such that the observed large reduction in incidence is likely a consequence of an expected, gradual accumulation of herd-immunity over the 4 years since its introduction in 2014.

Due to the co-circulation of different mosquito-borne viruses (i.e. zika, dengue, Mayaro, oropouche, yellow fever viruses) exanthematic disease is increasing in prevalence in Brazil, making it difficult for epidemiological data alone (e.g. case counts) to help us understand the transmission of any one of the viruses. Genomics plays a crucial role in rapidly detecting and tracking mosquito-borne viral transmission. Our study shows that genomic data generated using portable sequencing technology can be employed to assist public health laboratories in monitoring the diversity of circulating mosquito-borne viruses in order to better

understand the complex dynamics of viral importation and persistence among regions of Brazil.

Data availability

New genome sequences obtained in this study have been deposited in GenBank under accession numbers MK156053 - MK156056; MK156058 - MK156064; MK752950 - MK752958.

Ethical statement

This research was approved by the Pan American Health Organization Ethics Review Committee (PAHOERC) (Ref. No. PAHO-2016-08-0029). Processing of human samples was approved by the Institutional Review Board from the Fundação Oswaldo Cruz (CEP/CAAE: approval number 1.184.454).

Author contributions

Conceptualization: Z.P.G.M., J.L., F.M.P., R.C., A.M.B.F., L.C.J.A. and M.G. **Data Curation:** Z.P.G.M., J.L., F.M.P., A.L.S.M., M.G.; R.V.C., V.F., V.B.N., T.O. **Formal Analysis:** J.L., V.F., Z.P.G.M., and M.G. **Investigation:** V.B.N., F.M.P., Z.P.G.M., F.B.N., N.R.C.F., N.R.F., R.V.C., J.L., and M.G. **Validation:** J.L., L.C.J.A. and M.G. **Writing—Original Draft Preparation:** Z.P.G.M., J.L., F.M.P., L.C.J.A., and M.G. **Resources:** Z.P.G.M., F.M.P., A.L.S.M., A.L.A., C.F.C.A., R.V.C., W.K.O. R.S., and J.C. **Draft Revision:** Z.P.G.M., R.S., F.M.P., F.B.N., N.R.C.F., J.X., A.L.S.M., A.L.A., C.F.C.A., W.K.O., J.C., T.G., N.F., A.M.B.F., R.V.C., J.L., L.C.J.A. and M.G.

Acknowledgements

The authors thank all personnel from Health Surveillance Systems who coordinated surveillance and helped with data collection and assembly. The authors thank the Director of the Central Health Laboratory of Salvador Bahia, Arabela Leal E Silva de Mello and the Dr. Melissa Barreto Falcão for the clinical evaluation. The authors also thank the Coordinators of each Health Surveillance Unit (from the municipalities of Feira de Santana, Salvador, Camaçari, Coração de Maria, Conceição do Jacuípe, Itamarajú, Ipecaetá and Coaraci).

Disclosure statement

No potential conflict of interest was reported by the authors.


Funding

This work was supported by the ZiBRA2 project, supported by the Brazilian Ministry of Health (SVS-MS) and the Pan American Organization (OPAS) and founded by CNPq [grant number 440685/2016-8 and 440856/2016-7]; by CAPES [grant number 88887.130716/2016-00, 88881.130825/2016-00 and 88887.130823/2016-00]; by

Horizon 2020 Framework Programme [grant number PRES-005-FEX-17-4-2-33]. The Flavivirus Laboratory activities were also supported by Faperj (Fundação Carlos Chagas Filho de Amparo à Pesquisa do Estado do Rio de Janeiro) under the [grant number E-26/2002.930/2016], by the International Development Research Centre (IDRC) Canada over the [grant number 108411-001] and EU's Horizon 2020 Framework Programme through ZikaPlan and ZikAction under the [grant number 734584 and 734857]. JL was supported by a lectureship from the Department of Zoology, University of Oxford. MG is supported by Fundação de Amparo à Pesquisa do Estado do Rio de Janeiro - FAPERJ; Conselho Nacional de Desenvolvimento Científico e Tecnológico; Coordenação de Aperfeiçoamento de Pessoal de Nível Superior.

ORCID

Vagner Fonseca  <http://orcid.org/0000-0001-5521-6448>

Ana Maria Bispo de Filippis  <http://orcid.org/0000-0002-9815-9022>

Nuno Rodrigues Faria  <http://orcid.org/0000-0001-8839-2798>

References

- [1] Nunes MR, Faria NR, de Vasconcelos JM, et al. Emergence and potential for spread of Chikungunya virus in Brazil. *BMC Med.* 2015;13:102–103.
- [2] Naveca FG, Claro I, Giovanetti M, et al. Genomic, epidemiological and digital surveillance of Chikungunya virus in the Brazilian Amazon. *PLoS Negl Trop Dis.* 2019;7:13–13.
- [3] Xavier J, Giovanetti M, Fonseca V, et al. Circulation of Chikungunya virus East/Central/South African lineage in Rio de Janeiro, Brazil. *PLoS One.* 2019;11:14–16.
- [4] Brasil. Boletim Epidemiológico - Monitoramento dos casos de dengue, febre de chikungunya e doença aguda pelo vírus Zika até a Semana Epidemiológica 52 de 2018. Ministério da Saúde. Secretaria de Vigilância em Saúde; 2019. Available from <http://portalarquivos2.saude.gov.br/images/pdf/2019/janeiro/02/2018-067.pdf>.
- [5] Lourenço J, de Lima M M, Faria NR, et al. Epidemiological and ecological determinants of Zika virus transmission in an urban setting. *Elife.* 2017;9:6–29.
- [6] Lanciotti RS, Kosoy OL, Laven JJ, et al. Genetic and serologic properties of Zika virus associated with an epidemic, Yap state, Micronesia, 2007. *Emerg Infect Dis* 2008;14:1232–1239.
- [7] Lanciotti RS, Calisher CH, Gubler DJ, et al. Rapid detection and typing of dengue viruses from clinical samples by using reverse transcriptase-polymerase chain reaction. *J Clin Microbiol.* 1992;30:545–551.
- [8] Naveca FG, Nascimento VAD, Souza VC, et al. Multiplexed reverse transcription real-time polymerase chain reaction for simultaneous detection of Mayaro, Oropouche, and Oropouche-like viruses. *Mem Inst Oswaldo Cruz.* 2017;112:510–513.
- [9] Lanciotti RS, Kosoy OL, Laven JJ, et al. Chikungunya virus in US travelers returning from India, 2006. *Emerg Infect Dis.* 2007;13:764–767.
- [10] Quick J, Grubaugh ND, Pullan ST, et al. Multiplex PCR method for MinION and Illumina sequencing of Zika

- and other virus genomes directly from clinical samples. *Nat Protoc.* **2017**;12:1261–1276.
- [11] Fonseca V, Libin PJK, Theys K, et al. A computational method for the identification of Dengue, Zika and Chikungunya virus species and genotypes. *PLoS Negl Trop Dis.* **2019**;8:13–15.
- [12] Nguyen LT, Schmidt HA, von Haeseler A, et al. IQ-TREE: a fast and effective stochastic algorithm for estimating maximum-likelihood phylogenies. *Mol Biol Evol.* **2015**;32:268–274.
- [13] Suchard MA, Lemey P, Baele G, et al. Bayesian phylogenetic and phylodynamic data integration using BEAST 1.10. *Virus Evol.* **2018**;4:1–016.
- [14] US National Climate Data Center. Available from https://www7.ncdc.noaa.gov/CDO/cdoselect.cmd?data_setabbrv=GSOD.
- [15] Obolski U, Perez PN, Villabona-Arenas CJ, et al. MVSE: an R-package that estimates a climate-driven mosquito-borne viral suitability index. *Methods Ecol Evol.* **2019**;4:1–14.